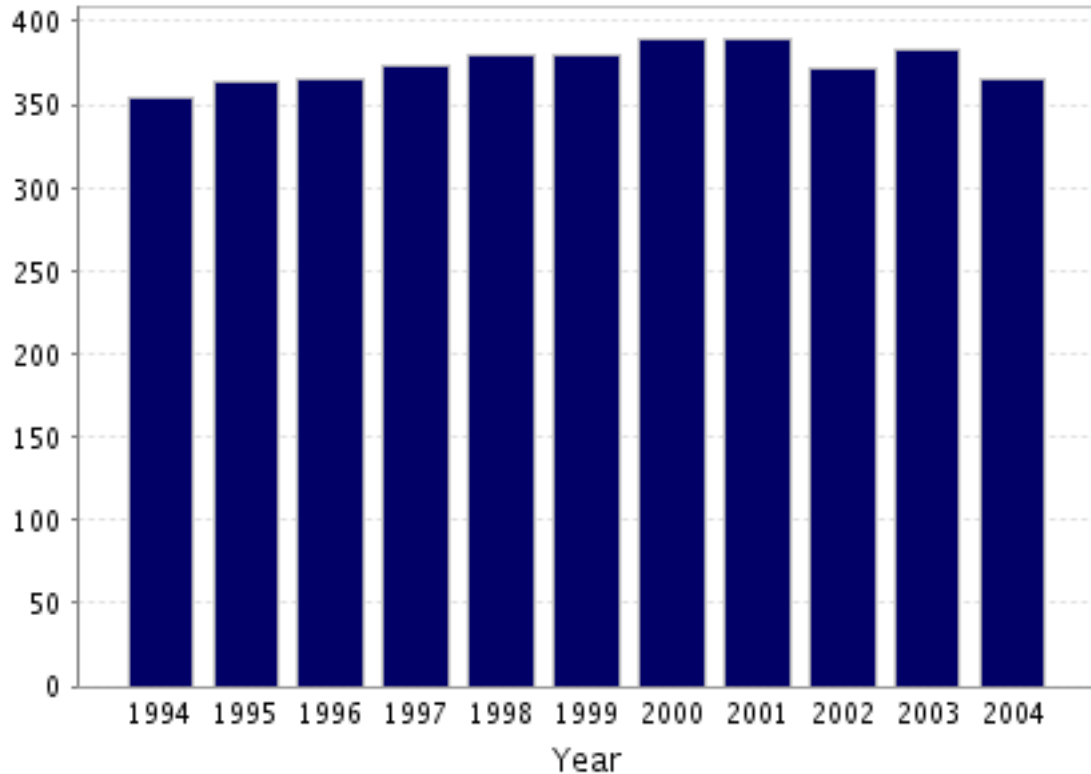


Ten-Year Trends

Research Services

Total Membership

Bedford Presbyterian Church, Bedford, VA



Your congregation's reported total membership, 365, was larger than the 2004 PC(USA) average, 215.

The chart above shows the number of members in your congregation for the years 1994 through 2004. Membership for the Presbyterian Church (U.S.A.) and its predecessor denominations (the UPCUSA and the PCUS) peaked in the early 1960s, then began a steady, slow decline. From 1994 to 2004, PC(USA) membership has declined about 1.2% annually. In general, smaller-membership congregations (less than 250 members) were more likely to experience net losses in the last ten years and larger-membership congregations (more than 250 members) were more likely to experience net gains. Nonetheless, a majority of all congregations (including larger-membership congregations) experienced net losses over this period.

Changes in membership result from the difference between new members added (membership gains) and current members subtracted (membership losses). The overall trend since 1992 has been one of declining gains. Since 1992, certificate and other losses have decreased more substantially than losses due to death. The total number of PC(USA) members lost each year has been declining in the last 10 years but the trend has not been sufficient to make up for the greater yearly decline in membership gains.

The average Presbyterian Church has 215 members (the median in 2004). About 24% of the total congregations report between 1 and 50 members. Another 23% report between 51 and 100 members.

Most PC(USA) members are white (92.6%). Other racial and ethnic members include African-Americans (3.0% of the total membership of the denomination), Asians (2.6%), Hispanics (1.2%), Native Americans (0.3%), and others (0.3%). Despite changes in the total membership of the PC(USA), the percentage of racial-ethnic minority members has stayed about the same since 1992. The ratio of female members (59%) to male members (41%) has also remained stable since the mid-1960s.

Key Questions:

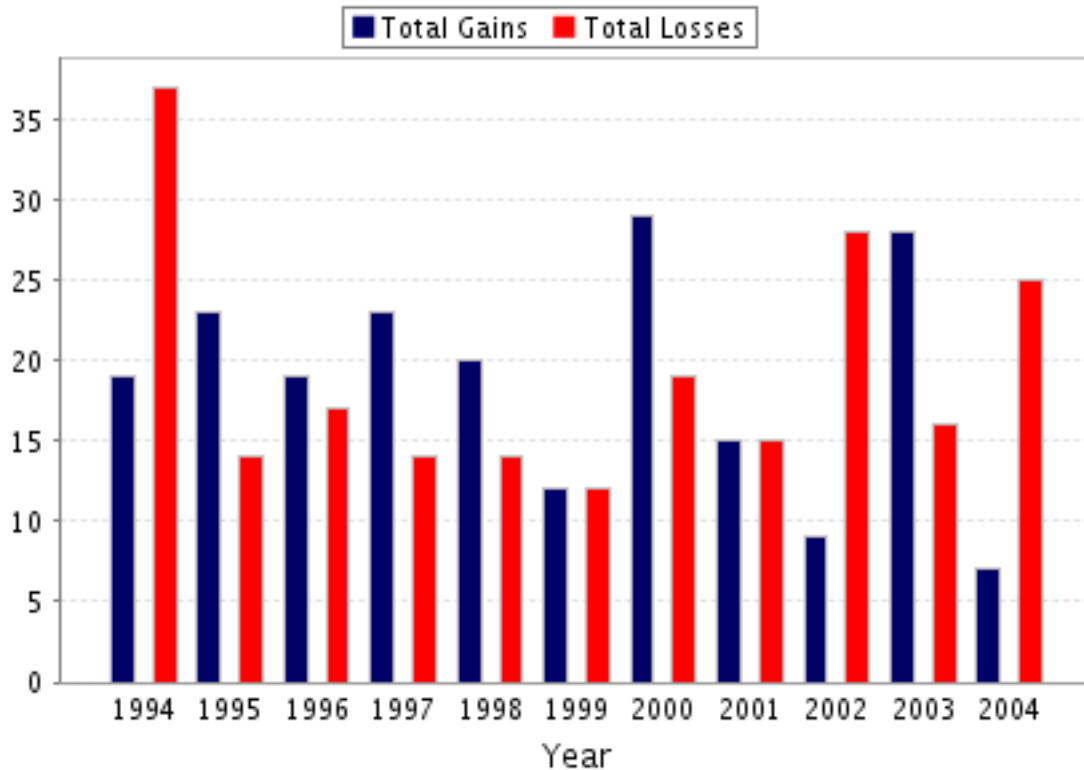
- Is your congregation larger or smaller than the average PC(USA) congregation?
- How does the percentage increase or decrease in membership of your congregation compare to that of the denomination as a whole?
- What factors in your congregation help explain the membership trends in your congregation?
- What factors in the community are relevant to your membership trends?
- What will be your congregation's strategy to increase its membership?

Note: "0" may indicate values of zero, missing data, or data "not reported."

Source: Comparative Statistics, annual editions 1994-2004, Presbyterian Research Services.

Total Gains and Losses

Bedford Presbyterian Church, Bedford, VA



Your congregation's reported total gains in membership, 7, were less than the 2004 average for all PC(USA) congregations, 17. The reported total losses, 25, were larger than the 2004 PC(USA) average, 20.

The chart above shows the total gains and total losses in membership reported by your congregation for the most recent ten years. The total number of PC(USA) members lost each year has been declining in the last ten years, but the trend has not been sufficient to make up for the greater yearly decline in membership gains.

Total Gains in membership is the number derived by adding gains through: Profession of Faith, Reaffirmation and Restoration (the number of persons received during the year through professions of faith, reaffirmation, and restoration after removal, deletion, or temporary exclusion); Certificate (persons received into membership upon receipt of a certificate of transfer from another church); and Other (all other additions to the active roll).

Total Losses in membership is the number derived by adding membership losses through: Certificate (persons received by other churches for whom certificates of transfer have been issued); Death (members whose names have been deleted because of death); and Other (all other persons whose names have been removed from the active membership roll through transfer from the active to the inactive roll, deletion from the active roll for any other reason, or temporary exclusion or removal from the active roll).

Key Questions:

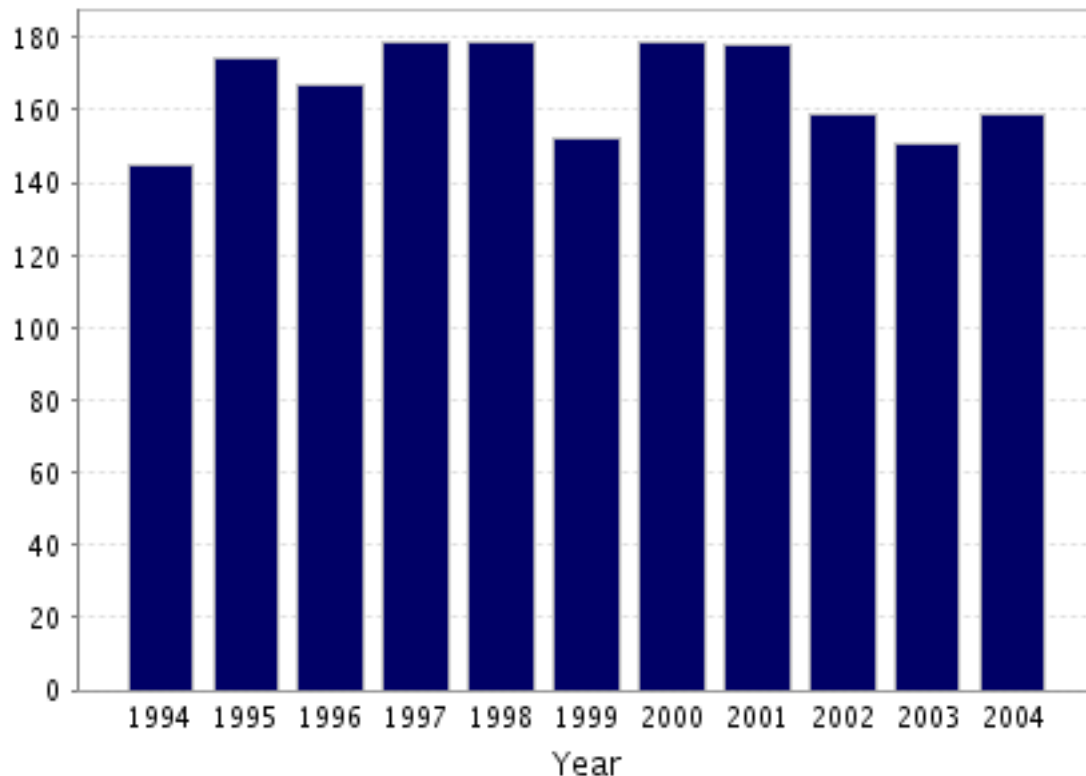
- What is the relationship between total losses and total gains in your congregation?
- Have membership gains been large enough to offset membership losses? What type of gains are characteristic of your congregation (e.g., Profession of Faith, Reaffirmation)?
- What type of losses are characteristic of your congregation (e.g., transfers, deaths)?
- What steps can your congregation take to increase membership gains and to decrease membership losses?

Note: "0" may indicate values of zero, missing data, or data "not reported."

*Source: Comparative Statistics, annual editions 1994-2004, **Presbyterian Research Services**.*

Worship Attendance

Bedford Presbyterian Church, Bedford, VA



Your congregation's reported worship attendance, 159, was larger than the 2004 PC(USA) average, 120.

The chart above shows the average worship attendance in your congregation for each year since 1994. The average (median) worship attendance for all Presbyterian Church (U.S.A.) congregations is 120 persons. This number is typical for American Protestant congregations, most of which average between 60 and 120 worshippers each Sunday. While membership in the PC(USA) has declined in the last ten years, the average worship attendance has remained relatively stable.

Smaller-membership churches tend to have a higher percentage of their members attending worship services than larger-membership churches. Low relative worship attendance -- defined as average attendance that is less than 52% of the congregation's total membership -- is about twice as common in larger-membership congregations (more than 250 members) as in smaller-membership congregations.

Key Questions:

- Is your congregation's worship attendance increasing or decreasing?
- What is the ratio of your worship attendance to your membership (i.e., is it above or below the current average of 52%)?

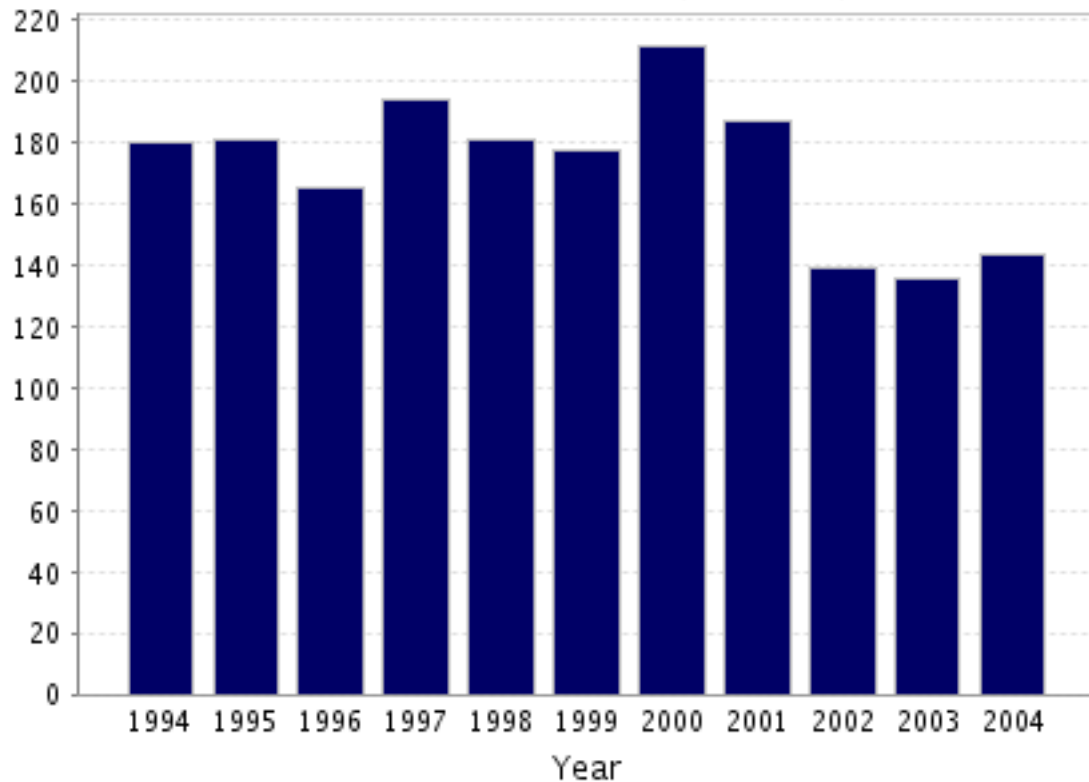
- How would you describe the people who regularly attend worship services?
- Is your worship style effective with younger generations (persons born after 1955), with new immigrant populations, or with other specific populations in your area?

Note: "0" may indicate values of zero, missing data, or data "not reported."

*Source: Comparative Statistics, annual editions 1994-2004, **Presbyterian Research Services.***

Christian Education Enrollment

Bedford Presbyterian Church, Bedford, VA



Your congregation's reported Christian education enrollment, 144, was less than the 2004 PC(USA) average, 152.

The chart above shows the average number of persons in your congregation enrolled in Christian education for the most recent 10 years. The total Christian education enrollment for all PC(USA) congregations has been stable during the last 10 years. Most PC(USA) congregations, regardless of size, report Christian education enrollment that is less than 50% of their congregation's total membership. In smaller-membership congregations, Christian education enrollment is a larger percentage of the membership than in larger-membership congregations.

Key Questions:

- How would you describe the trend in your congregation's Christian education enrollment?
- What is the ratio of your congregation's Christian education enrollment to its membership (the number of persons participating in Christian education divided by total membership)?
- Is this percentage increasing or decreasing?
- How does the changing age and/or family profile of your congregation relate to your congregation's Christian education trends?

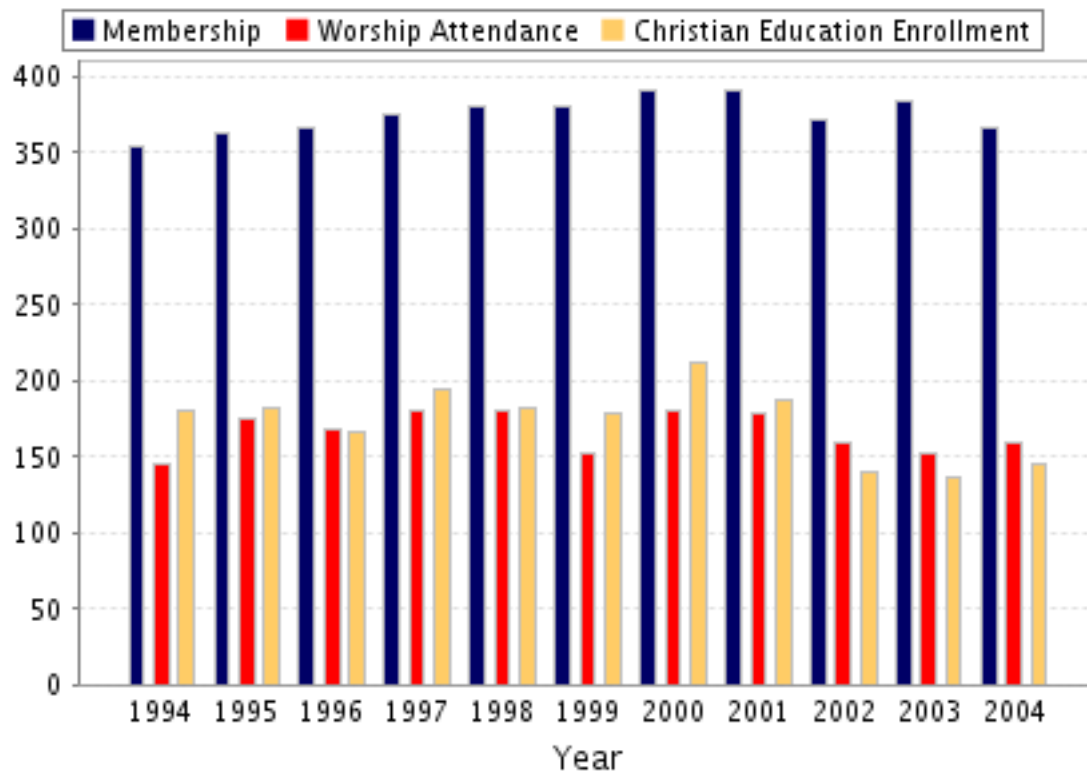
- How many new Christian education classes have been organized in the last two years?

Note: "0" may indicate values of zero, missing data, or data "not reported."

*Source: Comparative Statistics, annual editions 1994-2004, **Presbyterian Research Services.***

Membership, Worship Attendance and Christian Education Enrollment

Bedford Presbyterian Church, Bedford, VA



Your congregation's reported total membership, 365, was larger than the 2004 average for all PC(USA) congregations, 215. The reported average worship attendance, 159, was larger than the 2004 PC(USA) average, 120. The reported enrollment in Christian education, 144, was less than the 2004 PC(USA) average, 152.

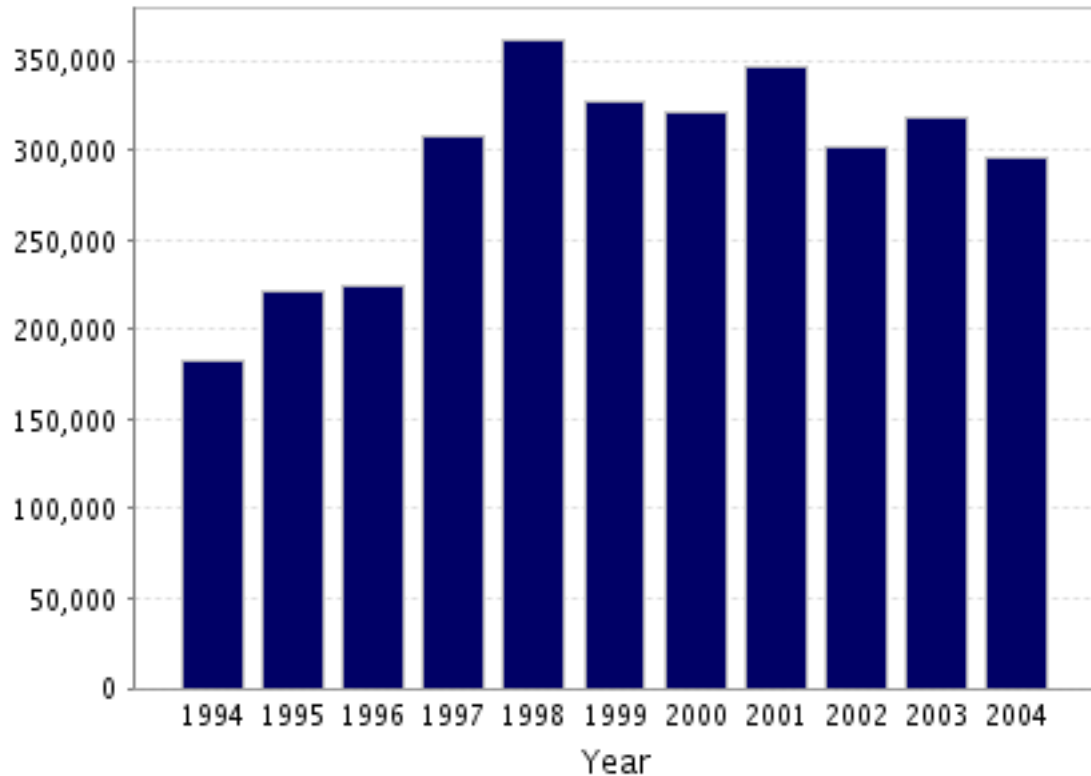
The chart above shows the number of members, worship attendance, and Christian education enrollment for the most recent 10 years.

Note: "0" may indicate values of zero, missing data, or data "not reported."

Source: Comparative Statistics, annual editions 1994-2004, Presbyterian Research Services.

Total Contributions

Bedford Presbyterian Church, Bedford, VA



Your congregation's reported total contributions, \$295,309, were larger than the 2004 PC(USA) average, \$215,249.

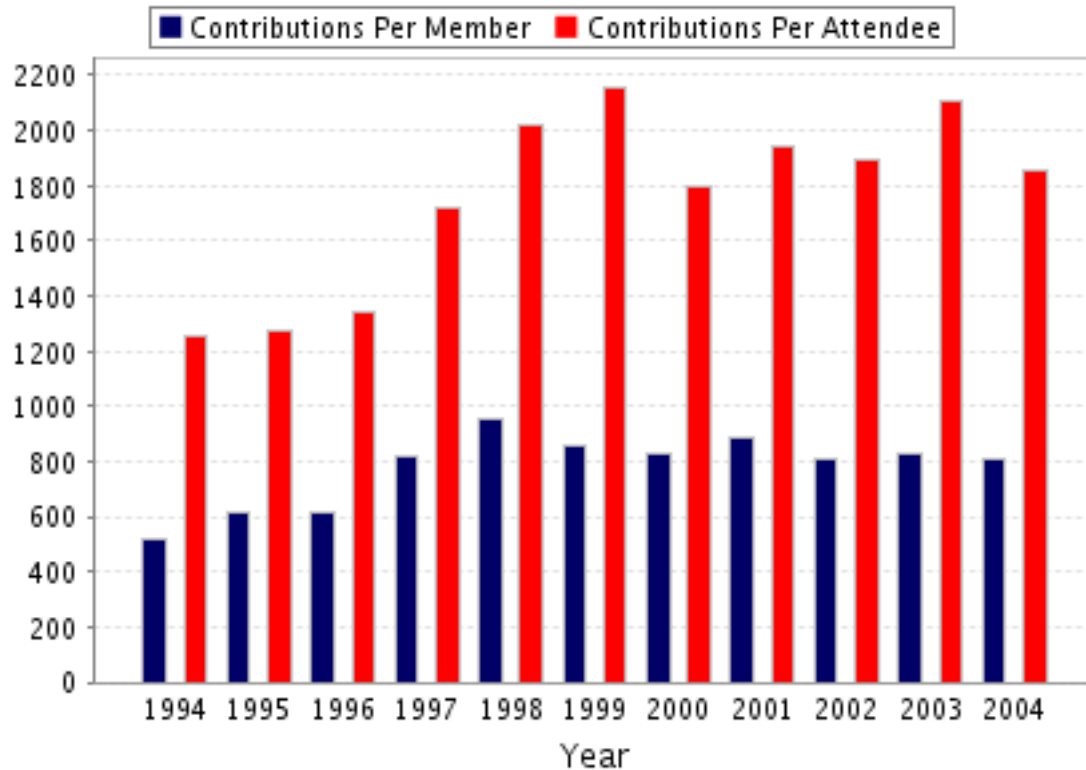
The chart above shows the total contributions to your congregation for the most recent 10 years. Contributions are all monies received by all treasurers of organizations in the church, including payments on pledges, loose offerings and special offerings.

Note: "0" may indicate values of zero, missing data, or data "not reported."

Source: Comparative Statistics, annual editions 1994-2004, Presbyterian Research Services.

Contributions per Person

Bedford Presbyterian Church, Bedford, VA



Your congregation's reported average contribution per member, \$809.00, was less than the 2004 average for all PC(USA) congregations, \$1,001.20. The reported average contribution per worship attendee, \$1,857.00, was about the same as the 2004 PC(USA) average, \$1,796.25.

First, the chart displays the average contribution per member for the last 10 years. Contributions are all monies received by all treasurers of organizations in the church, including payments on pledges, loose offerings and special offerings. Among all Presbyterian Church (U.S.A.) congregations the average contribution in 2004 per member was \$1001. In general, per-member contributions are larger in larger-membership congregations and smaller in the smaller-membership congregations. Second, the average contribution per worshiper was also calculated. Some experts recommend the later statistic because it reflects a more accurate picture of the giving level of the active members of the church. Generally, the average contribution per worshiper is the higher number. Among all PC(USA) congregations, average contributions per worshiper were \$1796 in 2004.

Key Questions:

- What are the significant trends in your congregation's contributions?
- Given this era of intergenerational transfer of wealth, how can your congregation increase the number of bequests?

- What factors are influencing the congregation's investment income?
- What is the level of your congregation's giving to mission?
- Has mission giving increased or decreased as a percentage of all contributions or expenditures?

Note: "0" may indicate values of zero, missing data, or data "not reported."

*Source: Comparative Statistics, annual editions 1994-2004, **Presbyterian Research Services.***